

漢字的奧秘

巡迴展覽

Mystery of Chinese Writing Roving Exhibition

漢字是中華文化的根脈，是記載、保存和傳承中華文明的重要載體，是鑄牢中華民族共同體意識的文化紐帶。漢字作為最古老的文字之一，自產生以來始終綿延不斷，沿用至今。

歷經幾千年的風霜，漢字不斷，中華文明才能綿延不絕。今天，漢字作為聯合國六種正式工作文字之一，是世界上最多人使用的文字。

《漢字的奧秘》巡迴展覽由康樂及文化事務署轄下的弘揚中華文化辦公室及中國文字博物館聯合籌劃，講述漢字的起源、發展和傳播的歷史進程，展示漢字書寫藝術的神奇魅力。

Chinese characters are an important root of Chinese culture and an embodiment of Chinese civilisation. They serve as a cultural link for building the sense of community for the Chinese nation. Being one of the oldest written languages, Chinese characters have been in use to this day.

Throughout thousands of years of development, the use of Chinese characters has never ceased, so that Chinese civilisation continue to flourish. Today, as one of the six official working languages of the United Nations, Chinese character as a written language is the most widely used in the world.

Jointly organised by the Chinese Culture Promotion Office of the Leisure and Cultural Services Department and the National Museum of Chinese Writing, the 'Mystery of Chinese Writing' roving exhibition introduces the origins, development and dissemination of Chinese characters, and showcases the charm of Chinese writing.



弘揚中華文化辦公室
CHINESE CULTURE PROMOTION OFFICE

源遠流長的中華文化博大精深，蘊含多元融和的特質，賦予我們共同的價值觀和生活模式。我們將透過展覽、活動、交流、合作和推廣，讓社會大眾體會中華文化的精髓，增強對國家認同和文化自信。

Chinese culture, with its long history, vast scope and profound depth, is characterised by its perpetuity, diversity and inclusiveness. It has shaped the values and way of life we all share. We aspire to make use of exhibitions, activities, exchanges, collaborations and promotions to enable young people and the public at large to appreciate the essence of Chinese culture and enhance their sense of national identity and cultural confidence.



中國文字博物館
National Museum of Chinese Writing

中國文字博物館是我國唯一一座以文字為主題，並集文物保護、陳列展示、學術研究、社會教育和文化交流為一體的國家一級博物館，是中華漢字文化的科普中心。

The National Museum of Chinese Writing is the only national first-grade museum in China that integrates heritage conservation, exhibition display, academic research, social education and cultural exchanges on the theme of characters, and it is the scientific centre of Chinese character culture.



漢字的演變

The Evolution of Chinese Characters

漢字起源於遠古刻畫符號，最晚成熟於商代（公元前1600年—前1100年），歷經甲骨文、金文、小篆、隸書、楷書等不同發展階段。

Originating from ancient inscribed symbols, Chinese characters matured in the Shang Dynasty (1600 BC - 1100 BC) and went through developmental stages of oracle bone script, bronze inscription, small seal script, clerical script and regular script.

五帝至夏朝 From the Five Emperors
Period to the Xia Dynasty
約前26世紀 — 前17世紀
Circa 26th Century BC - 17th Century BC

刻畫符號 Inscribed Symbols



主要載體：陶器、岩石等
Main Carrier: Pottery, Rocks, etc.

商朝 Shang Dynasty
約17世紀 — 前11世紀
17th Century BC - 11th Century BC

甲骨文 Oracle Bone Script



主要載體：龜甲、獸骨
Main Carrier: Turtle Shells, Animal Bones

西周至戰國 Western Zhou
Dynasty to Warring States Period
前11世紀 — 前221年
11th Century BC - 221 BC

金文 Bronze Inscription



主要載體：青銅器
Main Carrier: Bronze Vessels

秦朝 Qin Dynasty
前221年 — 前206年
221 BC - 206 BC

小篆 Small Seal Script



主要載體：石、帛、絹、簡牘等
Main Carrier: Stone, Silk, Bamboo,
Wooden Slips, etc.

西漢至東漢 Western Han to
Eastern Han Dynasty
前206年 — 公元220年
206 BC - AD 220

隸書 Clerical Script



主要載體：帛、竹簡、木牘、
紙張、石、陶
Main Carrier: Silk, Bamboo Slips,
Wooden Slips, Paper, Stone, Pottery

三國至清代 Three Kingdoms
Period to Qing Dynasty
220年 — 1911年
AD 220 - 1911

楷書/行書/草書 Regular Script / Running Script/ Cursive Script



主要載體：帛、絹、紙張、
石、陶等
Main Carrier: Silk, Paper, Stone,
Pottery, etc.

有「跡」可尋

Track and Trace



李鄧徑漢墓的漢代「大吉番禹」墓碑

Han Dynasty tomb brick with 'Dai' Panyu' (Great fortune to Panyu county) characters at the Lei Cheng Uk Han Tomb



宋代佛頭洲稅關遺址石碑

Stone stele of the Chinese Customs Station of Fat Tau Chau in the Song Dynasty

與宋朝官員李昉封地相關的「食邑稅山」界石

Boundary stone of the 'taxable land of the Li feudal estate' associated with the fiefdom of Li Maoying, an official of the Song Dynasty



南宋咸淳甲戌年(1274年)的宋代大廟灣刻石

Rock inscription at Joss House Bay, erected in cyclical year of Jaxu of the Xianchun reign during the Southern Song Dynasty (1274)



後人為紀念宋帝駕臨香港而刻鑿的宋皇堂碑石

Sung Wong Tai inscribed boulder, which was built in commemoration of the sojourn of monarchs of the Southern Song Dynasty in Hong Kong



九龍城侯王古廟的「一筆鶴」石刻，其旁伴有光緒十四年(1888年)對聯。「鶴」指白鶴山，為該廟所在。

Stone inscription with the character 'crane' written in one brushstroke inside Hau Wong Temple in Kowloon City. It is accompanied by a couplet dated the 14th year of Guangxu reign (1888). 'Crane' refers to Pak Hok Shan where the temple sitsuate.



現嵌於前九龍寨城衙門牆上的「壽」字石碑。張玉堂為大鵬偏副將，曾駐守九龍寨城，用棉花包裹拳頭書寫是其一絕。目前九龍寨城公園裡的「壽」及「墨緣」兩組字皆出自其手。

Stone slabs with character 'Shou' currently embedded in the wall of the Former Yamen of Kowloon Walled City. Zhang Yutang, the Commodore of the Dapeng Brigade, who stationed at the Kowloon Walled City, was famous for writing with his fist wrapped in cotton. The two sets of characters '壽' (Shou) and '墨緣' (Mo Yuan) now located in the Kowloon Walled City Park were both written by him.



漢字裡的 古人生活

Ancient Lives Portrayed by Chinese Characters

不少早期的漢字都是以形表意，其結構跟日常事物息息相關。這部分的展覽內容跟東華三院包玉星基金綜合職業復康中心暨宿舍的「易讀製作」工作室合作，透過智障及自閉症譜系人士創作的三個繪本場景，構想古人的生活，並生動地把漢字的演變融入其中。

Many early Chinese characters are pictographic and ideographic in nature whose structures are closely related to everyday objects. This part of the exhibition collaborates with the "Easy-Read Studio" of TWGHs Chi-Li Pao Foundation Integrated Vocational Rehabilitation Centre cum Hostel. Three pictorial scenes are created by people with intellectual disabilities and autism spectrum disorders to reimagine the lives of ancient people and vividly integrate the evolution of Chinese characters into daily scenarios.





場景 (一)：古人離家下田耕作，又在屋外圍放牲口。

Scene 1: The ancient people leave home to grow crops and keep their livestock outside the cottage.

藝術家：關偉傑、關潔婷、張國城、黃佳傑、沈凱洲

Artist: Kwun Wai Kit, Kwun Tsz Tung, Cheung Kuo Yu, Wong Shui Kit, Siu Hai Lam

家 厶 > 宀 > 家

「厶」代表屋，「宀」代表屋，加廣人住家即意義性情的房屋建築。

The part "厶" represents a house side. "宀" represents a roof, reflecting the ancient observation of changing landscape in ancient times.

禾 禾 > 禾 > 禾

上為垂下的谷穗，下為堅韌根。

The upper part represents a drooping grain ear, while the lower part represents the stem and roots.

豕 豕 > 豕 > 豕

豕字的變形，瘦弱則大，尾巴下垂。

The shape of a pig standing next with a fat belly and a drooping tail.

門 門 > 門 > 門

兩扇門扉之形。

The shape of two door gates.

苗 苗 > 苗

小草在田間生長之形。

The shape of grasses growing in a field.

牛 牛 > 牛 > 牛

牛頭上長著一對向上的犄角。

The two horns of a pair of upward-curving horns on its head.

田 田 > 田 > 田

田間的橫線交錯之形。

The shape of a crossed field.

羊 羊 > 羊 > 羊

羊頭上長著一對向下的犄角。

The goat has a pair of downward-curving horns on its head.

雞 雞 > 雞

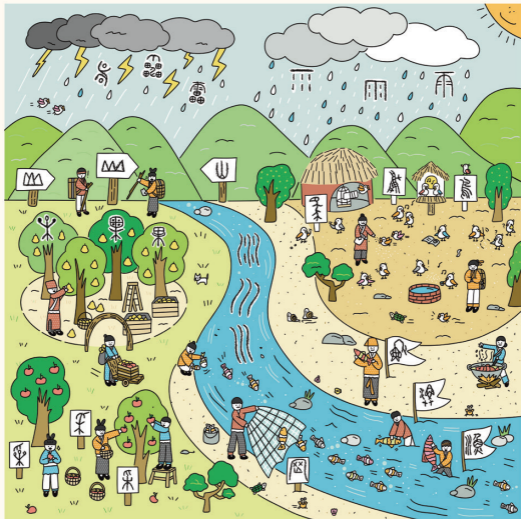
雞冠與雞的喙，後加「鳥」作聲符。

Comb's crown and its open beak, followed by "鳥" as the character's phonetic component.

字源 Stroke Source

字義 Stroke Inscription

字例 Small Size Script



場景(二)：古人捕魚和採摘野果，周遭可見果園及高山河川，遠處開始雷電交加。
 Scene 2: The ancient people fish and pick wild fruits in a place surrounded by orchards, mountains and rivers. Thunder and lightning begin to strike in the distance.

藝術家：曹江泰、溫曉琳、鄧安輝、張曉瑛、關偉傑
 Artists: Tang Kong Tai, Wan Hui Lan, Kwan Tsz Ying, Cheung Chun Yu, Kwai Wai Kit

山 山 **川** > **川** > **川**

山峰獨立之形。
 The shape of mountains standing side by side.

川 川 **川** > **川** > **川**

水在兩岸中間流動之形。
 The shape of water flowing between two banks.

雷 雷 **雷** > **雷** > **雷**

雷聲代表車輪，圓形閃電，中間之方形代表閃電。
 The circles, representing the wheels of a cart, refer to the second of thunder, while the square in the middle represents lightning.

雨 雨 **雨** > **雨** > **雨**

上面一畫表示天空，其下表示雨滴。
 The upper horizontal stroke represents the sky and the lower vertical strokes represent raindrops.

鳥 鳥 **鳥** > **鳥** > **鳥**

長尾形的鳥，鳥爪後來變成四點。
 A bird with a long tail, its claws are later represented by four dots.

漁 漁 **漁** > **漁** > **漁**

手伸長之形。
 The shape of reaching out to catch a fish.

網 網 **網** > **網** > **網**

表示「網」，編織而成的捕魚工具之形，後加「魚」，會性得聲。
 Originally, 網 (net), which refers to the shape of a woven fishing net, with the radical 魚 (fish) added as a signifier of the character's meaning.

果 果 **果** > **果** > **果**

樹枝上長出果實之形。
 The shape of fruits growing out of the branches of a tree.

采 采 **采** > **采** > **采**

手在樹上採摘果實之形。
 A hand picking fruit from a tree.



場景 (三)：古人用火烹煮食物，並享用美酒佳釀。

Scene 3: The ancient people make a fire to cook on and they enjoy the wine and delicacies together.

藝術家：黃佳傑、曾江泰、沈凱琳、鄧紫婷、溫曉琳

Artist: Wong Shun Kit, Tsang Kang Tai, Siu Hoi Lai, Chan Tsz Ting, Wan Ho Lan

火 Fire

 火氣上騰之形。比山之形稍有動勢。
 The shape of a rising flame which is more dynamic than the shape of a mountain.

刀 Knife

 上橫是刀，下橫是柄。
 The upper part represents a blade, and the lower part represents a handle.

米 Rice

 米粒之形。
 The shape of the rice grain.

酒 Wine

 本有「酉」，酒桶之形，象徵中藏身體亦可埋於土中，便於儲藏；「水」代表瓶內的液體。
 Originally 酉, which refers to the shape of a wine bottle, with a pointed base that allows the bottle to be partially buried in the earth for easy storage, and its radical 氵 represents the four wine vessels for the bottle.

食 Eat

 以口(亼)能於餚(饣)上盡食之形。四(凵)指碗或口與食之。
 The composition of a mouth (亼) placed over a part (饣) represents the action of eating, and the four sides and U-shape represent a bowl.

尊 Respect

 酒樽也，雙手捧奉酒樽(酉)之形，以表尊敬之意。
 A wine vessel and the shape of both hands holding a wine bottle (酉) represent a stage of respect.

皿 Vessel

 器皿所標之形。
 The shape of a food object.

豐 Abundant

 「豐」是稻的象形，會稽聚上放滿了糧物，與會稽聚之意，引申為大、豪華義。
 豐 is a pictograph of 豐, which is shown above that with grain, indicating development which is associated with being big and full.

字源 Source Base Script

字義 Base Description

字例 Small Base Script